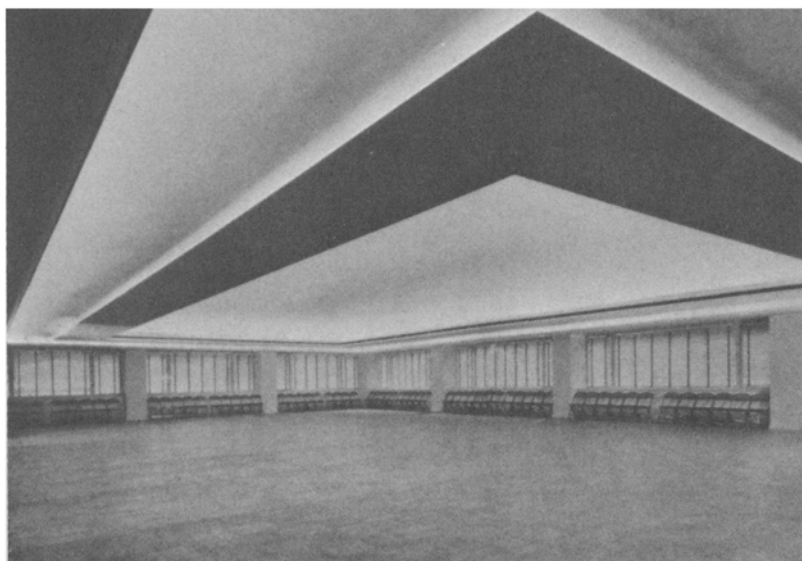


FALL MEETING



The illustration above presents a view of Chicago's beautiful sky-line
Photo by Kaufmann & Fabry, Chicago



The Grand Ball Room, Eighteenth Floor, Hotel LaSalle, Chicago



A View in the Hotel LaSalle Dining Room

THE Fall Convention of The American Oil Chemists' Society will be held at the Hotel LaSalle in Chicago on October 14 and 15.

The Society this year will use the facilities of the Hotel LaSalle. This hotel, situated in Chicago's financial LaSalle Street, is conveniently located with regard to railroad terminals and is very near the theatrical and shopping districts. It has been newly redecorated and offers a large space and convenient hall for the meeting. The local committee feels that its facilities should prove satisfactory. Two views of the LaSalle's interior are shown in the accompanying photographs.

Program—

Dr. R. C. Newton, who is arranging the technical and scientific program, reports progress in bringing the program into form. This year's presentations bid fair to be some of the most interesting. Anyone who has a paper to present should address Dr. Newton at Swift & Company Laboratories, Chicago. Plan now to attend this meeting!

Exhibits—

The Local Committee plans again to offer exhibits. You will be given an opportunity to view the latest developments in chemical equipment and apparatus as it applies to the oil, fat and soap industry. There will be more space available this year than in previous years. Anyone interested in exhibit space should address Mr. A. E. MacGee,

Skelly Oil Company, 121 West Wacker Drive, Chicago.

Bowling Tourney

A. E. King is arranging for a bowling tournament along the lines of those conducted in previous years. The Amaizo Cup will again be the coveted prize. This cup is now in the hands of the bowlers from the American Maize Products Company who took the tournament last year. The cup has been won successively by teams from Lever Bros., The American Maize Company, and a group of exhibitors, prior to being lodged in the hands of its present holders. Send in your entries early, addressed to A. E. King, Swift & Company, Soap Department, Chicago.

Golf—

No definite plans for golf have been made although arrangements

will be made for those desiring to play. Further plans in this regard will depend upon the interest shown at the convention.

Annual Dinner—

The dinner this year will not be held in the convention hotel. By way of innovation, the affair will be held at Old Heidelberg Inn. This German-American restaurant originated in the Chicago Century of Progress Exposition where it enjoyed a large measure of success. It has continued as one of Chicago's best downtown dining places. Its entertainment is famous—the "Old Heidelberg Octette" being known throughout the country. Some of our members may wish to visit the "Rathskeller" in the basement of "Old Heidelberg Inn." Here Herr Louie and his "hungry five" conduct a very informal and enjoyable entertainment program.

● **MUSEUM OF SCIENCE AND INDUSTRY** . . . Housed in the Fine Arts building of the Columbian Exposition, here are graphically presented many of the important discoveries of science and their application to modern industry, including an operating replica of a coal mine and many of the science exhibits of A Century of Progress.

* * *

● **ORIENTAL INSTITUTE AT THE UNIVERSITY OF CHICAGO** . . . Ancient civilizations brought to the 20th Century . . . Babylon . . . Thebes . . . The Gateways of Nebuchadnezzar . . . Relics from the Stables of Solomon . . . A model of the Tower of Babel. Among unusual American Museums, the most unusual.

* * *

● **FIELD MUSEUM OF NATURAL HISTORY** . . . The universe from creation to today. Exhibits in anthropology, botany, geology and zoology. Collections from all times and all parts of the world. Fossils, minerals, the world's largest collection of meteorites, plant life and mankind from the prehistoric to the various peoples of the present.

* * *

● **ADLER PLANETARIUM** . . . Only institution of its kind in America where daily the planets, the stars, the moon, the entire celestial orbit reproduce under a dome over your head all of the mysterious workings of the universe. Hundreds of thousands, here for the first time, have learned in layman's language the real meaning and importance of astronomy.

THE DETERMINATION OF CELLULOSE VALUE OF LINT FOR CHEMICAL INDUSTRY*

By L. N. ROGERS

PULP DEPARTMENT, BUCKEYE COTTON OIL COMPANY, MEMPHIS, TENN.

THE value of lint for chemical industry can be divided into two classifications of equal importance. (1) The money, or dollars and cents value as reflected in the amount or yield of purified cellulose obtainable from the lint in question. (2) The quality of purified cellulose.

The lint may have a good yield but may be trashy, off color, full of cinders, high iron, or have any number of other bad qualities, any one of which would render it either unusable or suitable only for a low grade of purified cellulose. The quality angle of the value of lint will not be discussed in this paper.

There are a number of ways to estimate the yield value of lint. The most accurate way to tell what yield will be obtained from a given lint is to subject it to some conditions that bear a direct relationship to the plant yields. This we will try to do throughout this paper. The cellulose manufacturer is told the quality of cellulose he is to furnish by his customers and he makes the greatest yield possible from the lint, at the same time fulfilling the customer's quality requirements.

There is no direct relationship between the staple of the lint and the yield. The following typical table gives data we collected over a period of one year.

Lint and Hull Fibre Sampling of Cars

Due to the wide variation of lint found in some cars the sampling of the car is a very important part of

Yield Range	Cars	Season 1934-35	
		Yield	Average Staple*
68.....	17	68.9	5 L
69.....	37	69.0	6 H
70.....	28	70.5	5 L
71.....	9	71.2	5 L
72.....	152	72.2	5 L
73.....	154	73.6	5 L
74.....	47	74.7	6 H
75.....	276	75.6	5 L
76.....	147	76.5	6 H
77.....	217	77.3	5 M
78.....	64	78.0	5 L
79.....	4	79.2	5 M
81.....	7	81.1	5 H
82.....	3	82.0	4 L

*Graded as to length of fiber according to Standard U. S. Government Grade.

Naturally, if the lint is to be used chemically, it should be tested chemically. While mechanical methods may be all right on some types of lint, there are certain conditions under which they do not show the true yield.

It is with these thoughts in mind, backed up by about 15 years' experience that we present the pot cook yield method for yield determinations.

this method. It is essential that the sample obtained from the car truly represents the type of lint or hull fibre, as the case may be. Lint should be unloaded under shelter if it should happen to be raining, as the chemical and money values of lint are lowered after being wet.

Wet and rusting ties contaminate the lint with iron and a damp outer surface makes accurate sampling for yield more difficult.

*A Paper Presented at Twenty-Eighth Annual Convention A. O. C. S., Dallas, Tex., May 13-14, 1937.